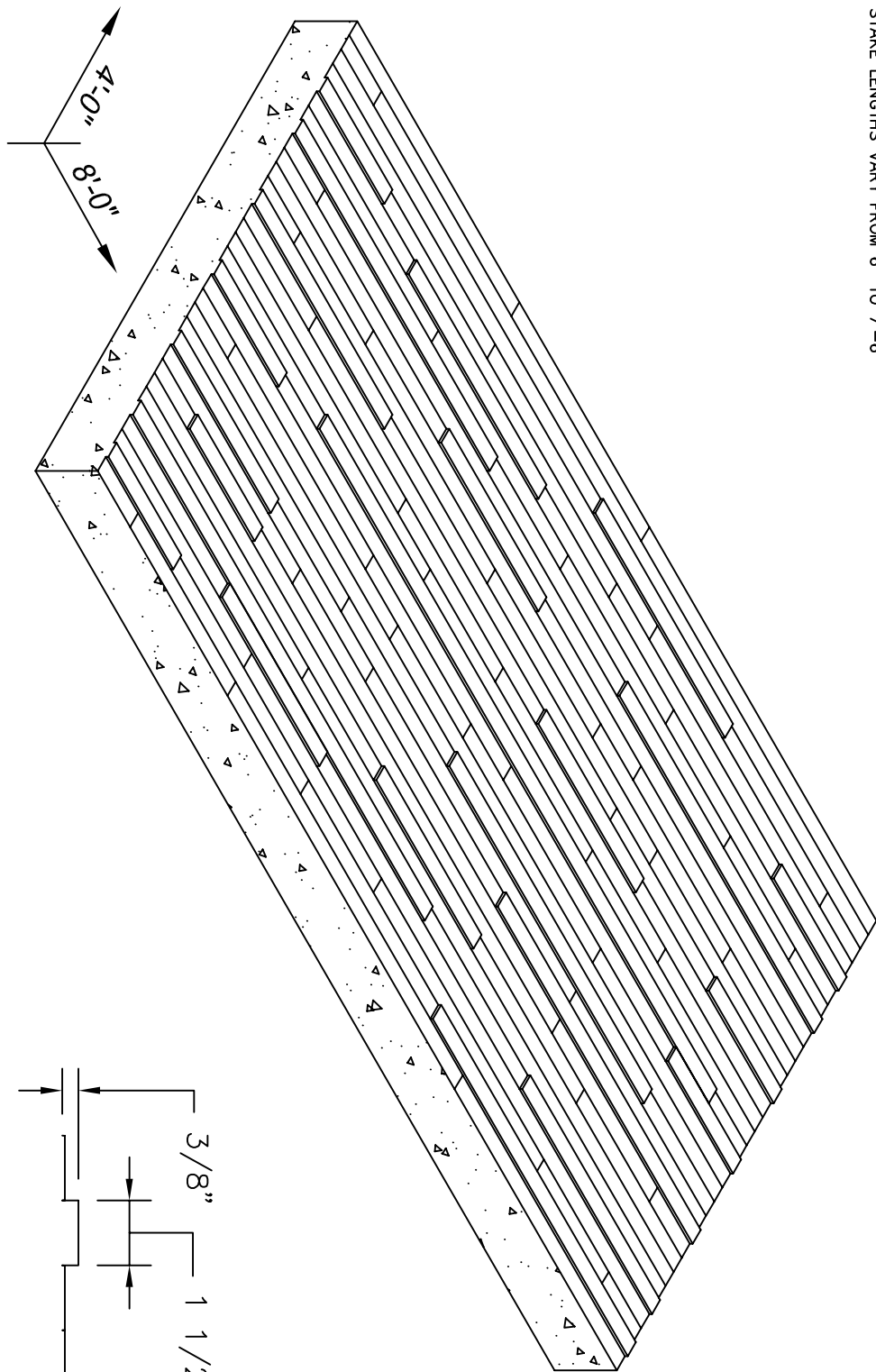


**GENERAL NOTE(S):**

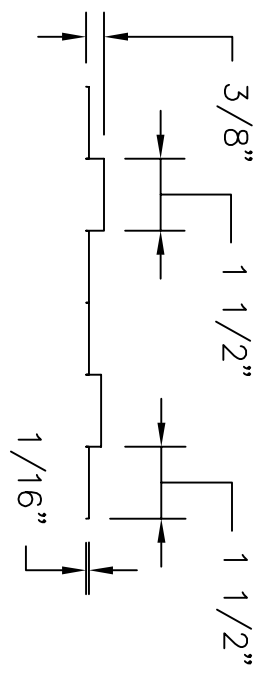
1. FORM LINER MATCHES TOP-TO-BOTTOM AND SIDE-TO-SIDE.
2. STAKE LENGTHS VARY FROM 6" TO 7'-6"

- SINGLE USE
- MEDIUM USE
- HIGH USE



**ISOMETRIC VIEW**

SCALE: NOT TO SCALE



**SECTION VIEW**

SCALE: 3" = 1'-0"

REV. MARK	REVISION	BY	CHK	APP	DATE	DESIGNED:	DATE:
						DRAWN:	PART NUMBER:
						CHECKED:	QUANTITY REQUIRED:
						APPROVED:	SCALE:
						MFG. REP.:	DWG. REF. NO.:
						SHEET NUMBER:	SOM456

<b>Southern Metal &amp; Plastic Products</b>	
3400 TREE CRT. IND. BLVD., ST. LOUIS, MO 63122-6889	
PH: 800-325-3597	FAX: 636-825-6567
WEBSITE: <a href="http://www.sometals.com">www.sometals.com</a>	
TITLE: #S456 RANDOM ROUGH STAKE	
REV.	